

MARKING DETAILS

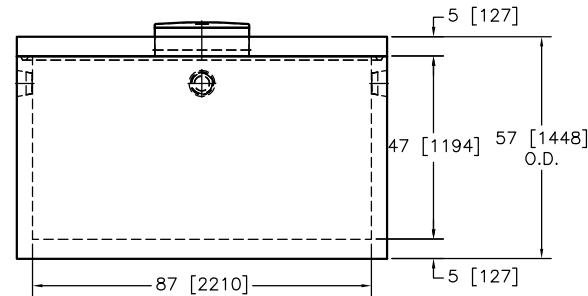
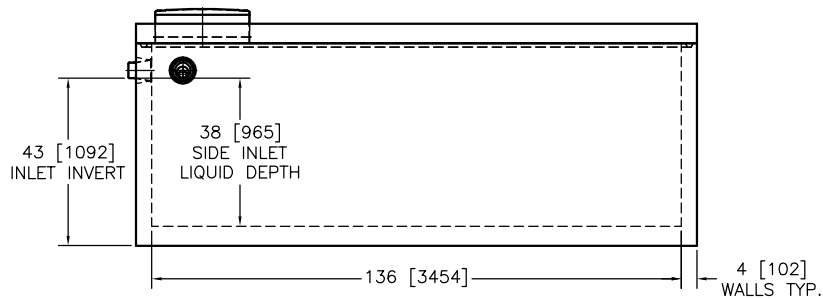
BABCOCK SUPPLY		
3600 L	10000 L	2006
4500 L	11365 L	2007
3600 L	13640 L	2008
8800 L	15900 L	P
9100 L	T	H
MAXIMUM BURIAL DEPTH 1.5 m		
NON-SUL	A.G.I.N.P.	RAM/NEI

CAST IN CONCRETE INLET END BESIDE ACCESS

Standard Construction – 2000 G / 9100 L holding tank
 Concrete: 35 MPA at 28 days, 5–8% air entrainment, 0.45 water/cement ratio
 Reinforcing: Rebar Gr400W. 10m & 15m – 1" [25mm] min. concrete coverage
 Structural fibre – virgin copolymer polypropylene
 Liquid Depth: 38" [965mm]
 Side Inlet Capacity: 1621 G [7369 L]
 Air Capacity: 384 G [1746 L]

Notes:

- 'DO NOT ENTER DANGER NE PAS ENTRER' tags on H.D.P.E. access covers
- Inlet marked on appropriate end
- 3/4" [19mm] butyl sealant used to seal lid to tank
- Tank is assembled at Babcock Supply Ltd
- Tank is intended for non-sulphate soil only
- Above ground installation not permitted
- Inlet accept NPS-4 pipe (rubber pipe seals)
- Lid weight = 5700 lbs [2585 kg]
- Tank weight = 12970 lbs [5883 kg]
- Assembled weight = 18670 lbs [8468 kg]
- Maximum burial depth = 60" [1524 mm]
- Excavate hole approximately 12" [305 mm] larger than outside of tank



Babcock Supply Ltd.
PRECAST CONCRETE PRODUCTS

DRESDEN, ONT.

PHONE
519-683-2696

FAX
519-683-2548

TANK MODEL #

2000 GALLON / 9100 LITRE
HOLDING TANK

DWG #

2000GHOLDING