

MARKING DETAILS

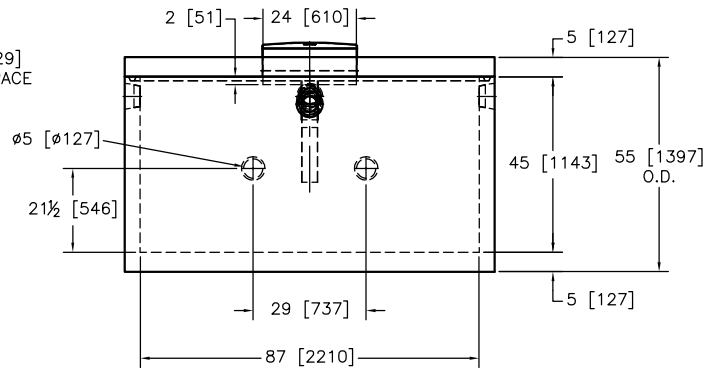
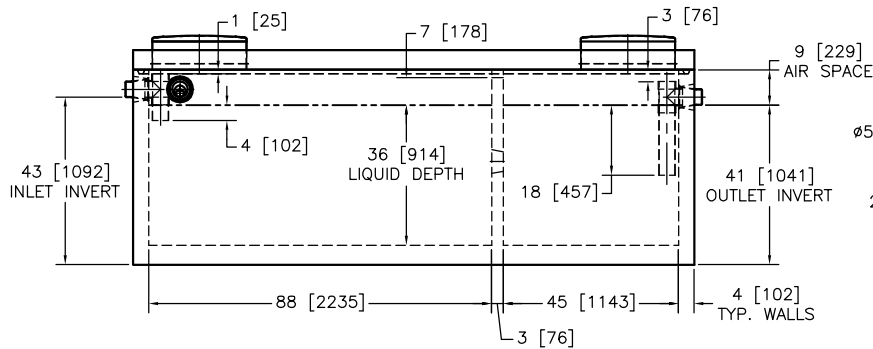
BABCOCK SUPPLY		
□ 3600 L	□ 10000 L	■ 2006
□ 4500 L	□ 11365 L	□ 2007
□ 5600 L	□ 12640 L	□ 2008
■ 6800 L	□ 15900 L	□ P
□ 9100 L	■ T	□ H
MAXIMUM BURIAL DEPTH 1.5m		
NON-SUL.	A.G.I.N.P.	R.M.N.E.L.

CAST IN CONCRETE INLET END BESIDE ACCESS

Standard Construction – 1500 G / 6800 L trickle type septic tank
 Concrete: 35 MPA at 28 days, 5–8% air entrainment, 0.45 water/cement ratio
 Reinforcing: Rebar Gr400W. 10m & 15m – 1" [25mm] min. concrete coverage
 Structural fibre – virgin copolymer polypropylene
 Liquid Depth: 36" [914mm]
 Working Capacity: 1501 G [6825 L]
 Air Capacity: 375 G [1706 L]

Notes:

1. Inlet baffle – ϕ 100 mm SDR35 pipe and tee type
2. Outlet device – $\frac{1}{8}$ " [1.5 mm] effluent filter
3. Partition wall is monolithically cast with side walls and floor
4. 'DO NOT ENTER DANGER NE PAS ENTRER' tags on H.D.P.E. access covers
5. Inlet and Outlet marked on appropriate ends
6. $\frac{1}{2}$ " [13mm] butyl sealant used to seal lid to tank
7. Tank is assembled at Babcock Supply Ltd
8. Tank is intended for non-sulphate soil only
9. Above ground installation not permitted
10. Inlets and outlet will accept NPS-4 pipe (rubber pipe seals)
11. Lid weight = 5700 lbs [2585 kg]
12. Tank weight = 13450 lbs [6100 kg]
13. Assembled weight = 19150 lbs [8662 kg]
14. Maximum burial depth = 60" [1524 mm]
15. Excavate hole approximately 12" [305 mm] larger than outside of tank



Babcock Supply Ltd.
 PRECAST CONCRETE PRODUCTS

DRESDEN, ONT.

PHONE
519-683-2696

FAX
519-683-2548

TANK MODEL #

**1500 GALLON / 6800 LITRE
 SEPTIC TANK**

DWG #

1500GSEPTIC